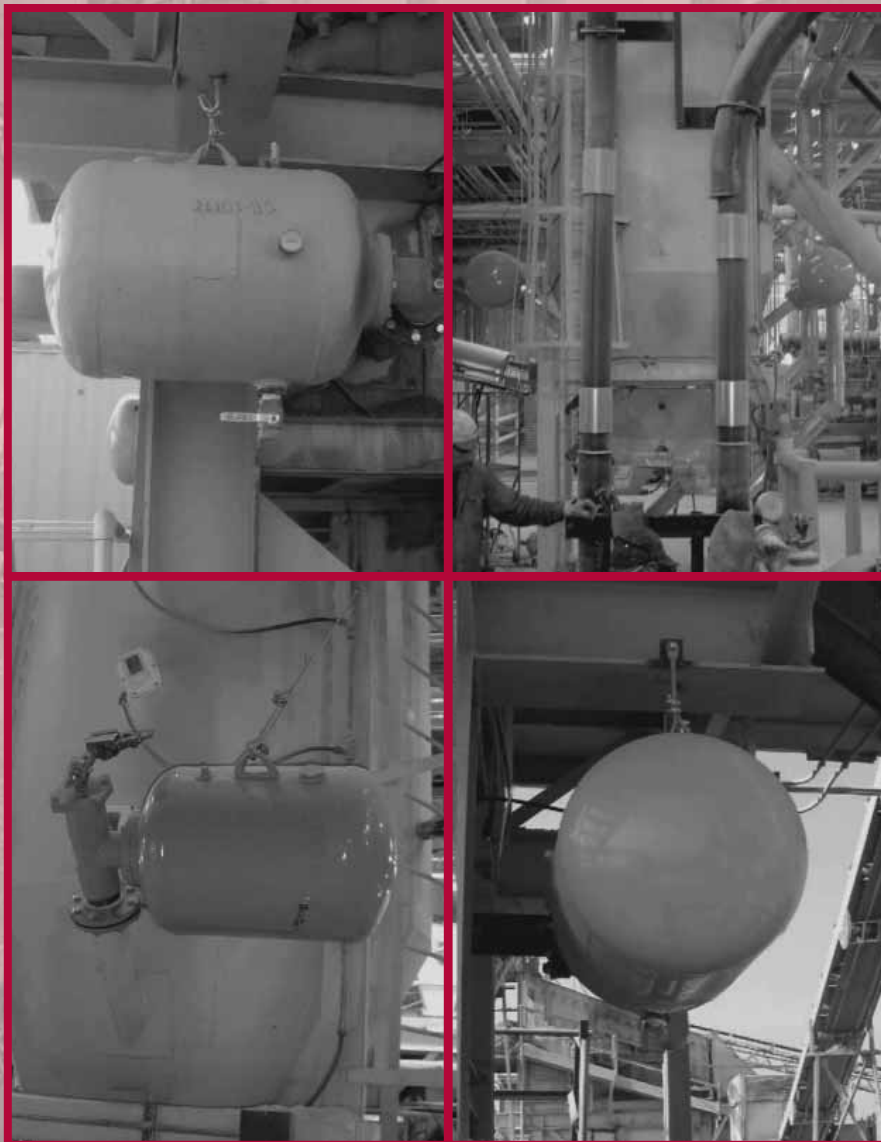




DECA VIBRATOR

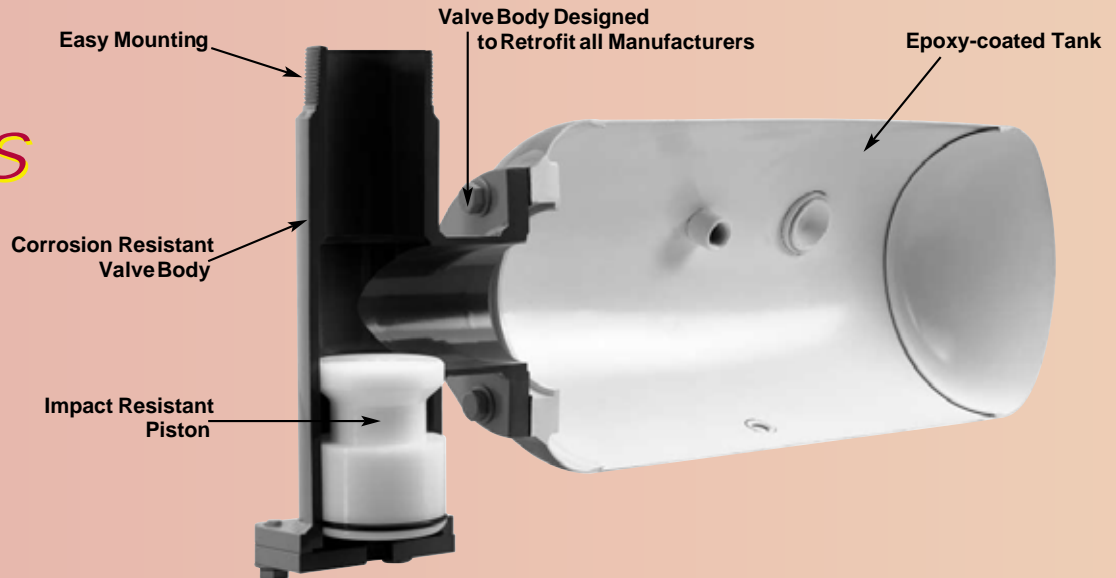
Division of DECA Products, Inc.

AIR CANNONS



Flow Aid Technology

DECA AIR CANNONS



FEATURES

- **Energy-efficient**
all force is absorbed by the material.
- **Non-destructive**
force is focused on the material not on the structure.
- **Valve body design is more flow-efficient and less restrictive.**
- **Self-cleaning seat**
air flows over seat into hopper.
- **Low noise level**
material absorbs discharge.
- **Low maintenance**
one moving wear part.
- **Impact-resistant piston made from UHMW.**
- **No special air requirements**
operates on standard plant air.
- **Minimal CFM requirements**
timer cycles system as needed.
- **Tanks meet ASME pressure vessel codes.**
- **Valve body designed to retrofit all manufacturers' air cannons.**
- **Tanks are white epoxy coated on inside.**
- **Valve body interior is corrosion resistant.**
- **Easy maintenance**
removable end plate allows easy inspection.

AIR VOLUMES - Cubic Feet

AIR PRESSURE (PSI)	CC2-8-20	CC4-12-28	CC4-20-30	CC4-24-30	CC4-24-48
0	0.51	1.63	4.87	6.96	11.52
40	1.39	4.43	13.25	19.00	31.35
50	1.73	5.541	6.562	3.673	9.18
60	2.08	6.65	19.87	28.40	47.02
70	2.43	7.76	23.19	33.14	54.85
80	2.78	8.87	26.50	37.88	62.70
90	3.12	9.98	29.82	42.61	70.53
100	3.47	11.09	33.13	47.35	78.37
110	3.82	12.20	36.44	52.08	86.20
120	4.16	13.30	39.76	56.82	94.04



DECA VIBRATOR

Division of DECA Products, Inc.

DECA AIR CANNONS



CC2-8-20



CC4-12-28



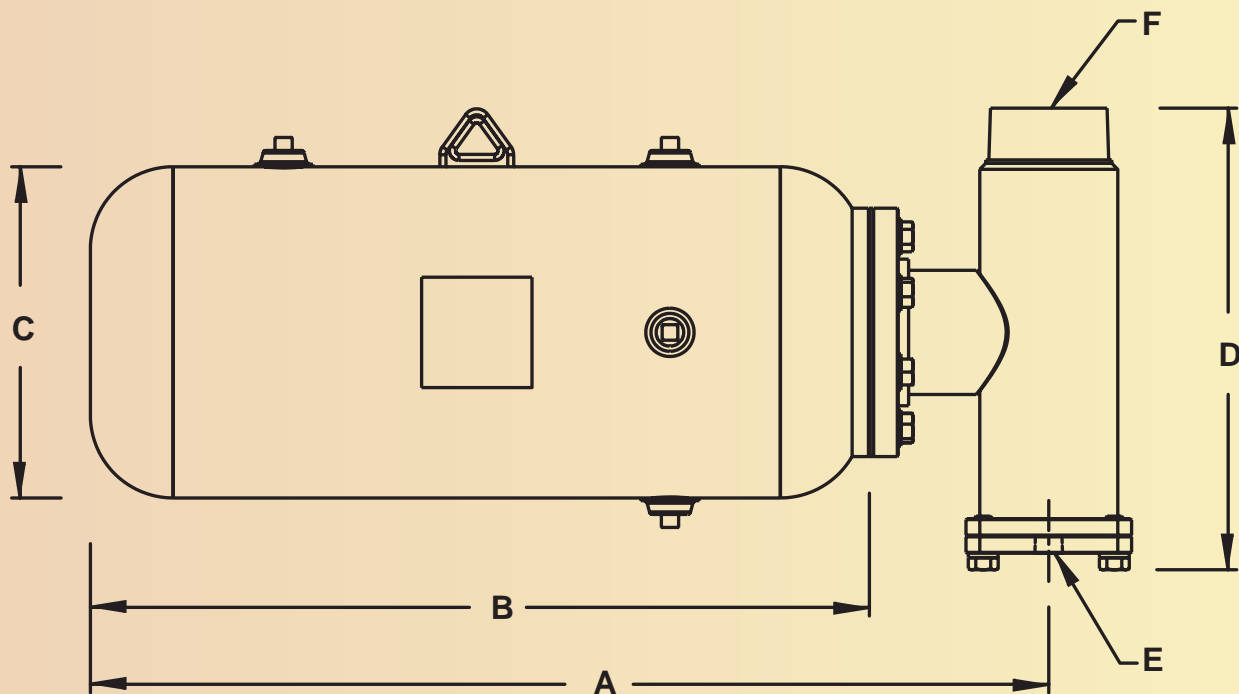
CC4-20-30



CC4-24-30



CC4-24-48



DIMENSIONS – Inches

MODEL NO.	A	B	C	D	E	F
CC2-8-20	23.8	20	8	9.3	3/8" NPT	2" NPT
CC4-12-28	34.7	28	12	16.7	3/4" NPT	4" NPT
CC4-20-30	37.1	30	20	16.7	3/4" NPT	4" NPT
CC4-24-30	37.1	30	24	16.7	3/4" NPT	4" NPT
CC4-24-48	55.1	48	24	16.7	3/4" NPT	4" NPT



DECA VIBRATOR

Division of DECA Products, Inc.

AIR CANNONS

SIZING

STEP 1

Determine number of levels:

$\frac{\text{Slope Length}}{8} = \text{Number of air cannon levels}$
8

STEP 2

Determine number of cannons at each level:

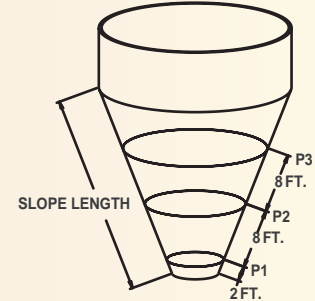
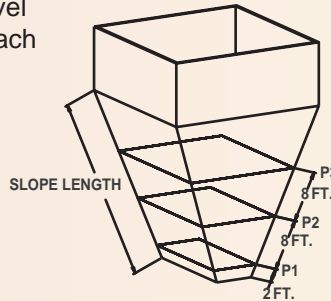
First level is a two foot up slope and subsequent levels are eight feet apart. Calculate the perimeter at each level and divide by 15 to determine number of cannons at each level.

P1/15 = # of cannons on level 1
P2/15 = # of cannons on level 2
P3/15 = # of cannons on level 3
Etc. per level

STEP 3

Determine size of cannon by chart:

Model	Material Density (lbs./ft.3)
CC2-8-20	< 35
CC4-12-28	35-50
CC4-20-30	50-70
CC4-24-30	70-90
CC4-24-28	90 >



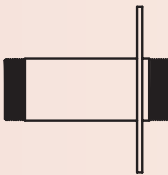
ACCESSORIES

All Deca cannons come complete with a quick exhaust valve, safety cable and a safety relief valve.



30-DEGREE MOUNT PLATE WITH PIPE FLANGE ASSEMBLY

Used to induce material flow downward toward discharge outlet.



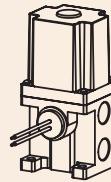
HOPPER WITH SLOPING DISCHARGE

Used to aerate material to promote flow.



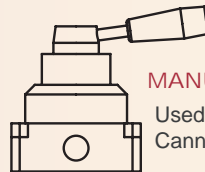
FAN JET MOUNT PLATE WITH PIPE FLANGE ASSEMBLY

Used to dislodge wall clinging material from slope section of hopper.



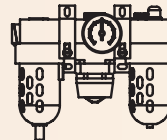
AIR ACCESSORY KIT: SOLENOID VALVE, CHECK VALVE, AND BALL VALVE

Used for automated firing, prevent accidental firing, and as an airline control.



MANUAL THREE-WAY VALVE

Used to manually control Deca Cannon's firing.



FRL'S

Filter/regulator/lubricator used to assure clean pressure regulated/lubricated air.

TIMER ASSEMBLY

Used to control the Deca Cannon's firing time interval and sequence.



DECA VIBRATOR
Division of DECA Products, Inc.

11/07

P.O. Box 1286 • Bridgeview, Illinois 60455-0286

(708) 974-9422 • Fax (708) 974-9429

1-866-384-3788

Website: www.decavibrator.com • Email: sales@decavibrator.com

SPECIFICATIONS SUBJECT TO CHANGE